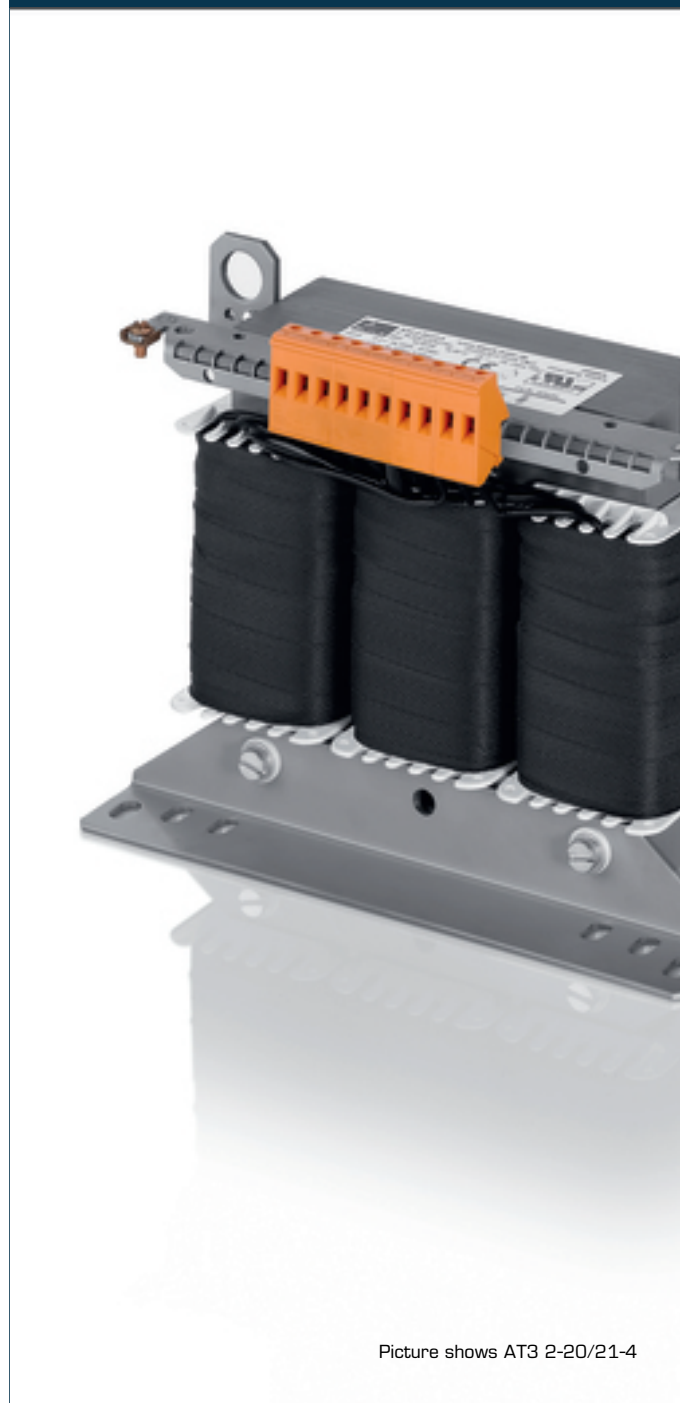


Autotransformer

AT3 10-22/23-4



Picture shows AT3 2-20/21-4

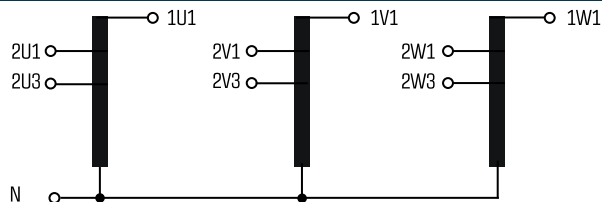
Advantages

- Low weight and small size (compared to isolating transformers)
- Very high efficiency
- Patented assembly technology to lower heat losses
- Very good corrosion protection and low noise thanks to vacuum impregnation
- Fixed, contact protected screw connection terminals complying with UVV BGV A3
- Multifunctional fixing rails with 12 oval slots
- Enlarged fixing rail for easy installation from above
- Integrated crane eyes

Applications

Autotransformer for adjustment of the voltage on the input and output sides with no requirement for electrical isolation.

Sample application



Standards

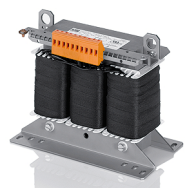


Autotransformer
to: VDE 0570 Teil 2-13, DIN EN 61558-2-13, EN 61558-2-13,
IEC 61558-2-13, UL 5085-1/-2, CSA 22.2 No.66

Approvals



UL 5085-1/-2, CSA 22.2 No.66



Autotransformer AT3 10-22/23-4

Electrical data	
Type	
AT3 10-22/23-4	
Input	
Rated input voltage	3 x 220/230 Vac
Rated frequency	50 - 60 Hz
Output	
Rated output voltage	3 x 400 Vac
Rated Power	10.000 VA
Vector group	YNΔ0
Efficiency	94.0 %
Approvals	
Approvals	cURus
Environment	
Ambient temperature max.	40 °C
Safety and protection	
Type	Open type
Insulation class	F
Protection index	IP 00
Safety class (prepared)	I
Short circuit strength	non-short-circuit proof
Test voltage	4000 Vac, 50 Hz
Order numbers	
Recommended enclosure	BGE-065
Order Number	AT3 10-22/23-4

Mechanical data	
Type	
AT3 10-22/23-4	
Terminal and mounting	
Fixing method	Fixing rail
Fixing screws	M8
Terminals	Screw-type terminals
Measures and weights	
Core type	3 UI 150/77
Weight	42.4 kg

